

Plot 38, 15 Sunset Drive Meadow View Park, Cowes, Isle of Wight, PO31 7GE  
Asking Price £795,000  
EPC Rating:     Council Tax Band:



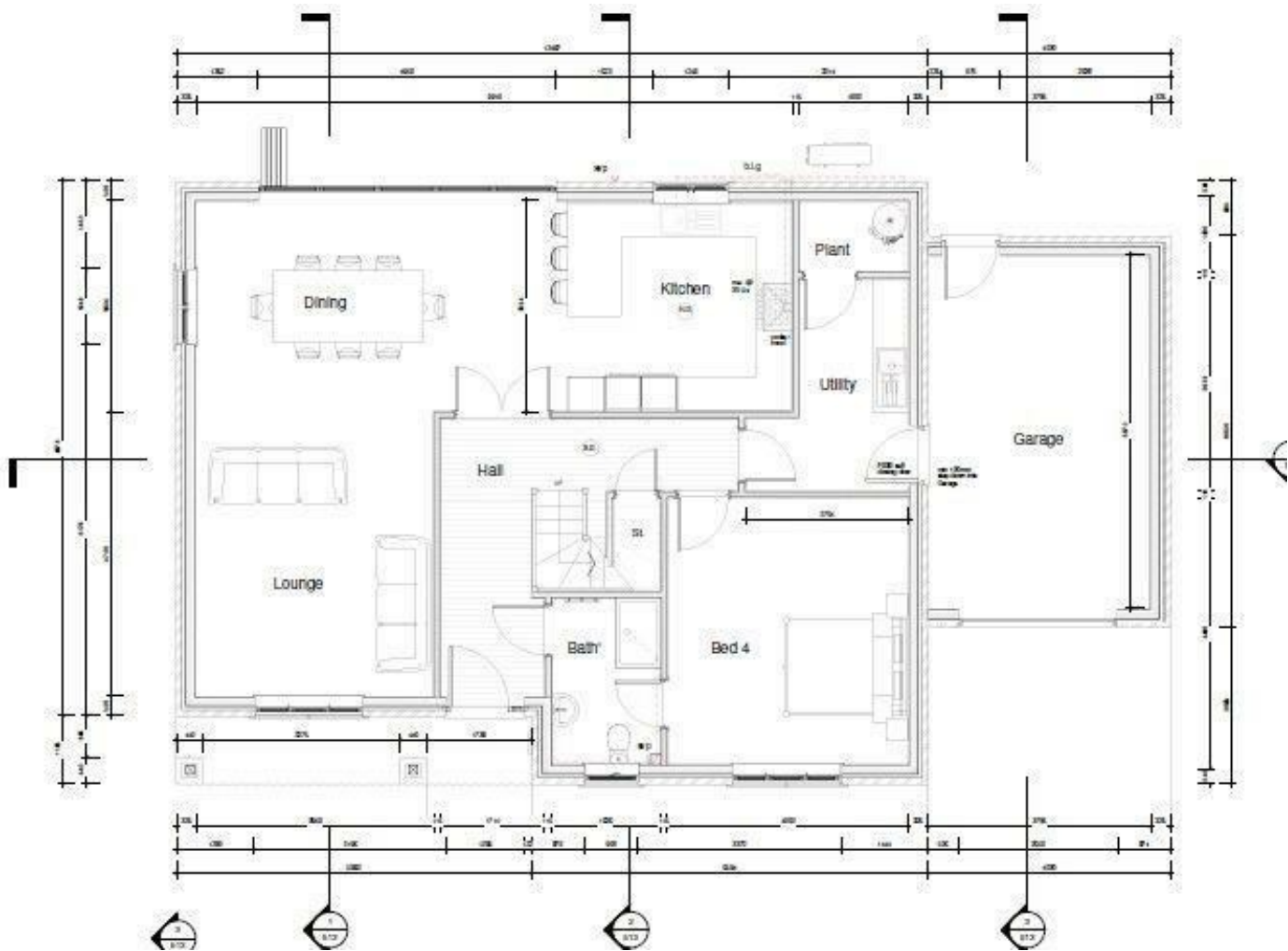


A stunning detached chalet-style home, Plot 38 Meadow View Park, situated in the highly sought-after development. Designed with modern living in mind, this exceptional new build offers futureproof features alongside spacious and versatile accommodation, totalling an impressive 201m<sup>2</sup> of internal space.

ELLIOTT  
LINCOLN  
ESTATE AGENTS & ASSOCIATES

Reassuringly familiar, refreshingly new

Office 4, Baring Chambers Denmark Road  
Cowes  
Isle of Wight  
PO31 7SY  
01983 642622  
office@elliottlincoln.co.uk  
www.elliottlincoln.co.uk



| Energy Efficiency Rating                    |         |                         |
|---|---------|-------------------------|
|   | Current | Potential               |
| Very energy efficient - lower running costs |         |                         |
| (92 plus) A                                 |         |                         |
| (81-91) B                                   |         |                         |
| (69-80) C                                   |         |                         |
| (55-68) D                                   |         |                         |
| (39-54) E                                   |         |                         |
| (21-38) F                                   |         |                         |
| (1-20) G                                    |         |                         |
| Not energy efficient - higher running costs |         |                         |
| England & Wales                             |         | EU Directive 2002/91/EC |